

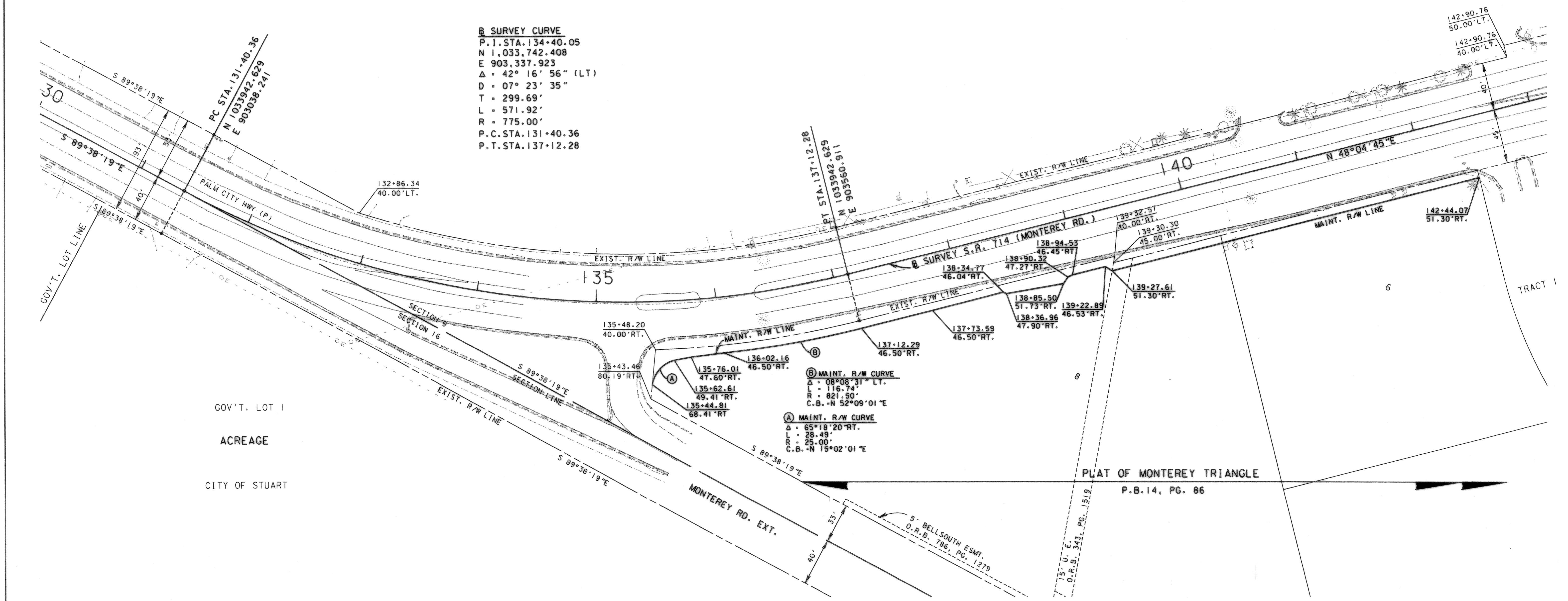
CITY OF STUART

ACREAGE

**B SURVEY CURVE**  
 P.I. STA. 134+40.05  
 N I. 033,742.408  
 E 903,337.923  
 $\Delta = 42^\circ 16' 56''$  (LT)  
 $D = 07^\circ 23' 35''$   
 $T = 299.69'$   
 $L = 571.92'$   
 $R = 775.00'$   
 P.C. STA. 131+40.36  
 P.T. STA. 137+12.28

**B MAINT. R/W CURVE**  
 $\Delta = 08^\circ 08' 31''$  LT  
 $L = 116.74'$   
 $R = 821.50'$   
 C.B. - N  $52^\circ 09' 01''$  E

**A MAINT. R/W CURVE**  
 $\Delta = 65^\circ 18' 20''$  RT  
 $L = 28.49'$   
 $R = 25.00'$   
 C.B. - N  $15^\circ 02' 01''$  E



GOV'T. LOT 1  
 ACREAGE  
 CITY OF STUART

PLAT OF MONTEREY TRIANGLE  
 P.B. 14, PG. 86

SEE SHEET ONE FOR LEGEND AND GENERAL NOTES

S.R. 714 (MONTEREY ROAD) FROM S.W. PALM CITY ROAD TO S.R. 5 (U.S. 1-FEDERAL HIGHWAY)

<b>MAINTENANCE MAP</b>	FLORIDA DEPARTMENT OF TRANSPORTATION RIGHT OF WAY MAPPING	APPROVED BY <i>Jeffrey Erick</i> 11/20/03 DISTRICT RIGHT OF WAY SURVEYOR	DATE 11/20/03	REVISION BY DATE	REVISION BY DATE	BY MORAVA	DATE 03-17-03	FED. PROJ. NO. N/A	SECTION 09092-MAINT.(1)	MAPS PREPARED BY F.D.O.T. DISTRICT 4	FIELD BOOK NO.'S
		CHECKED BROWN	DATE 06-25-03	STATE ROAD NO. 714	MARTIN COUNTY	W.P.I. NO. N/A	SCALE: 1" = 40'				
		ITEM/SEGMENT NO. 2288621	SHEET 7 OF 8								
		S.R. 714 (MONTEREY ROAD) FROM S.W. PALM CITY ROAD TO S.R. 5 (U.S. 1-FEDERAL HIGHWAY)									

\*I:\s\m\p\09092-maint\l\m\m\dat\107.dwg